

WELCOME TO



FRESHMAN
ORIENTATION

AUGUST 2024

School Nurse

Shelli-Rae Gregg

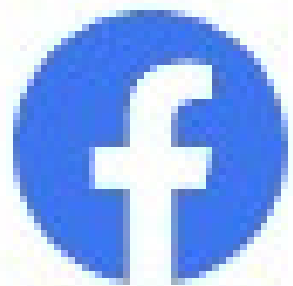




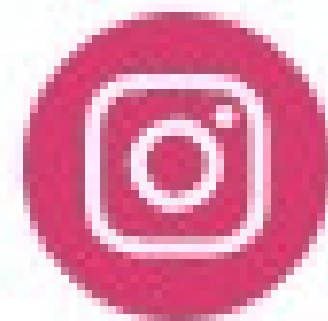
www.pccafanclub.com

Fan Club Mission Statement: The FAN (Future Artist network) Club includes Alumni, Parents, Faculty & Staff who support students, faculty & programs in the dance, instrumental, choral, technical, theatrical, and visual arts majors.

Our purpose is to raise awareness of events and programs, fundraise to support programs and help with facility and equipment upgrades in our two theaters on campus.



PCCAFanClub



@pccafanclub

Fundraise via the following:

- Concession stand sales
- PCCA merchandise sales
- Sponsorship sales
- Running Raffles and Auctions
- Orchestrating various other money-making events



WHAT WE DO AND WHY?

To Say YES to Teacher requests for things like:

- Disney and Universal workshops
- Travel assistance to Art Basil in Miami
- New sewing Machines
- Tools for the Tech Department
- Trip assistance to NYC and SETC
- Travel contribution for once in a lifetime opportunities to perform in places kids only dream of

Help us say YES!

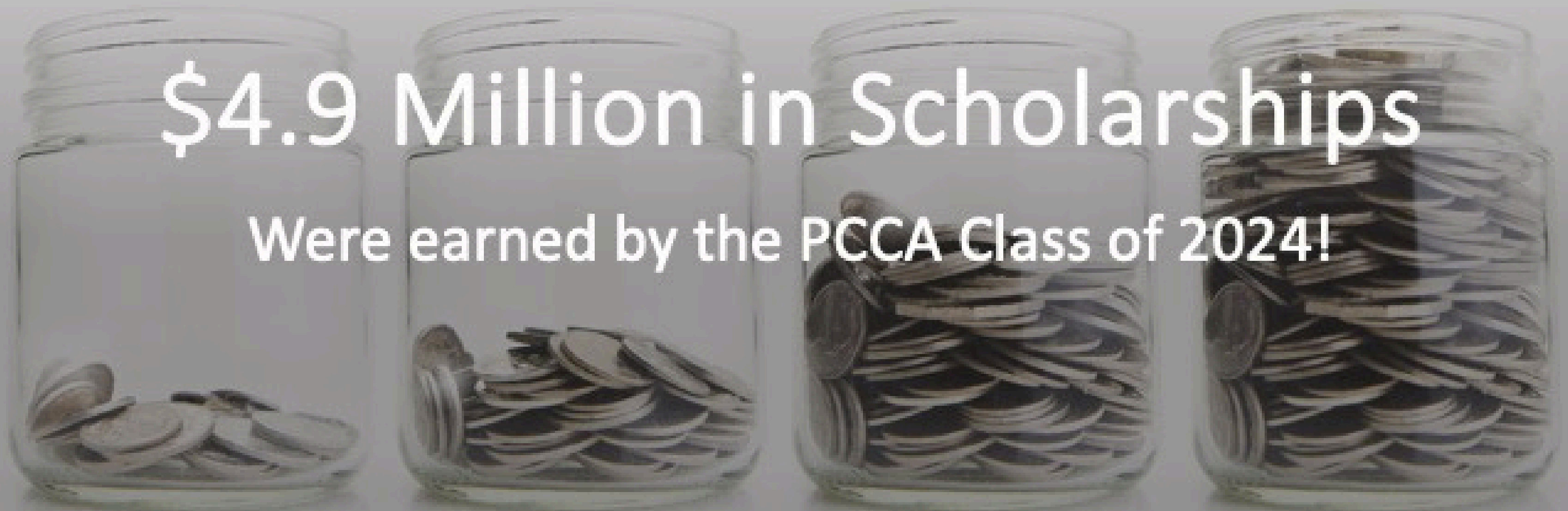


Volunteer	Volunteer at an event- we promise you won't miss your student's performance
Become	Become a Sponsor
Donate	Donate to our Concession stand
Participate in	Participate in our HundredX Fundraiser Survey submissions
Scan	Scan on the QR code to join the PCCA Fan Club and start receiving our weekly newsletter!



\$4.9 Million in Scholarships

Were earned by the PCCA Class of 2024!



The Pinellas County Center for the Arts congratulates

ZA'NAISHA MCGUIRE

on your acceptance into



ELON UNIVERSITY

BFA Musical Theatre

Start your journey at gopcca.com



The Pinellas County Center for the Arts congratulates

CORY DIAZ

on your acceptance into



ROOSEVELT UNIVERSITY

CHICAGO COLLEGE OF PERFORMING ARTS

BFA Musical Theatre



Start your journey at gopcca.com



The Pinellas County Center for the Arts congratulates 2/4

RASHED GUESS

on your acceptance into



Brenau UNIVERSITY

BFA Musical Theatre

Start your journey at gopcca.com



The Pinellas County Center for the Arts congratulates

GILBERT

BFA

Start your journey at gopcca.com

The Pinellas County Center for the Arts congratulates

SOPHIA BRYANT

on your acceptance into



AUBURN UNIVERSITY

BFA Musical Theatre

Start your journey at gopcca.com



The Pinellas County Center for the Arts congratulates

LAUREN ROSS

on your acceptance into

Columbia COLLEGE CHICAGO

BA Musical Theatre



Start your journey at gopcca.com



The Pinellas County Center for the Arts congratulates

ALANA HOGAN

on your acceptance into



NYU | STEINHARDT

BM Vocal Performance:
Musical Theatre

Start your journey at gopcca.com



The Pinellas County Center for the Arts congratulates

BREHUEPEN

BFA

Start your journey at gopcca.com

Who to See?

Arts

- **Classroom Arts Teacher**
- **Arts Department Chair**
- **Ms. Natalie Calderon, School Counselor**
- **Mr. Vasallo, Program Director**
- **Mr. Brown, Principal**

Who to See? Academics

- **Classroom Teacher**
- **Natalie Calderon, School Counselor**
- **Mr. Vasallo, Program Director**
- ***Mrs. Johnson, Mr. Machado, or Mr. Patrick**
- **Mr. Brown, Principal**

Who to See? School Issues

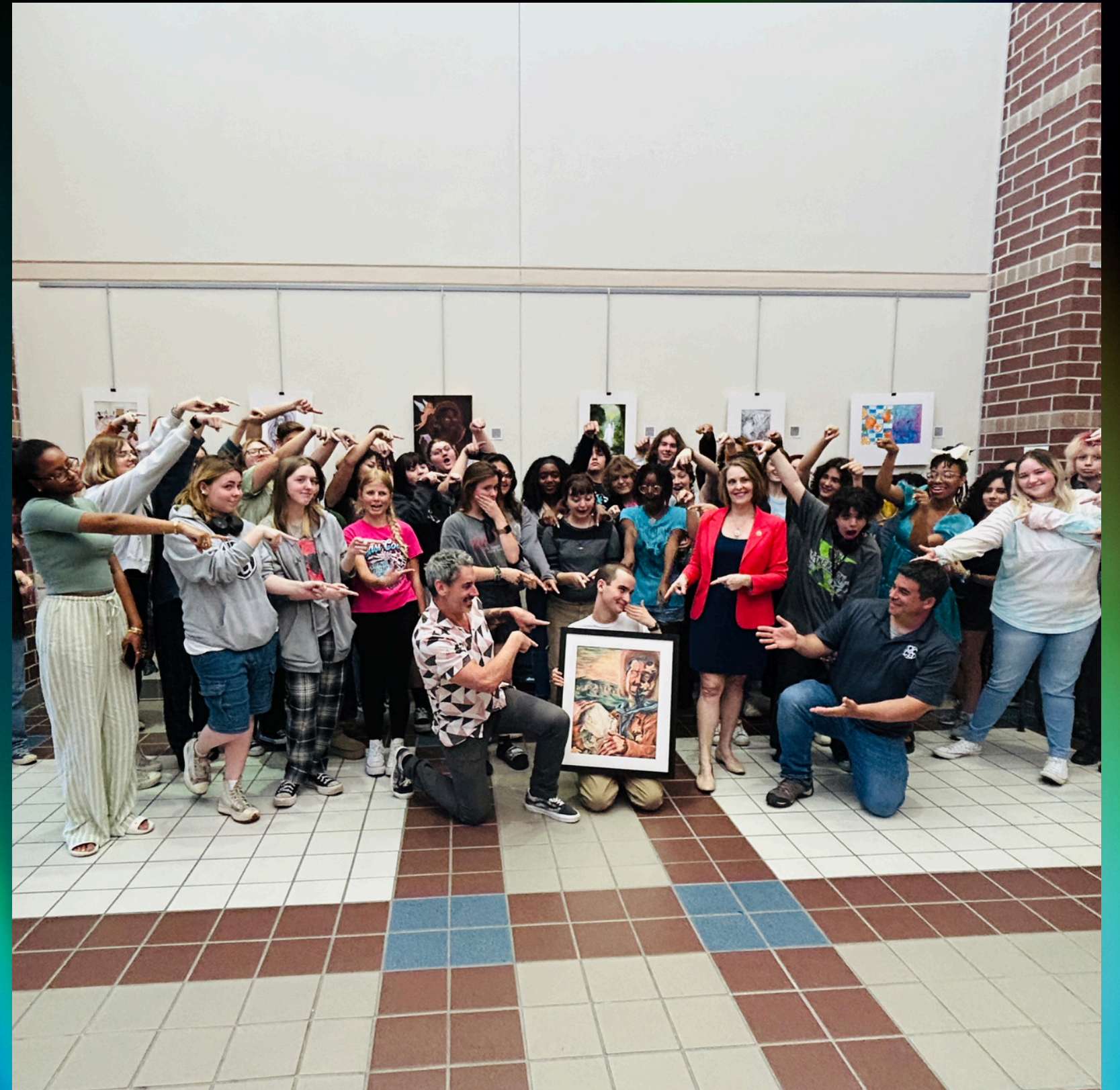
- **Grading issues? Contact the teacher first**
- **School Counselor – Academics, Scheduling, & Social Issues**
- **Mr. Vasallo – Program Policy & Discipline**

PCCA Senior Survey

Class of 2024

What is the best thing about the PCCA Program?

- **Sense of Community – 44%**
- **Trips & Experiences – 19%**
- **Personal Achievements – 18%**



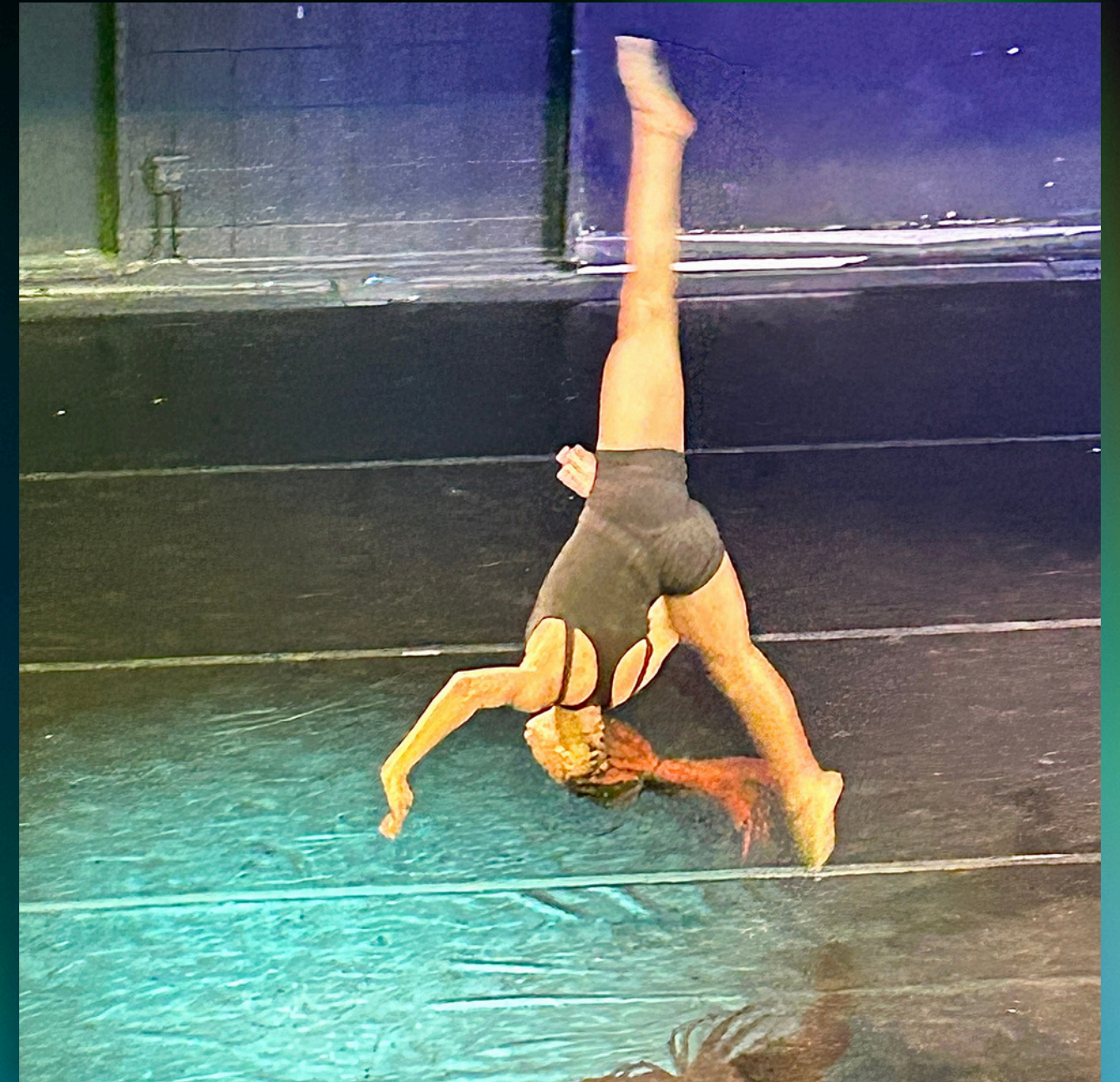
What was the biggest challenge you faced in the PCCA program?

- Finding Balance – 29%
- Personal Challenge – 24%
- Staffing Changes – 17%
- Competition – 15%



What would you like to see changed about PCCA?

- Communication/Community Building across programs – 39%
- Funding – 10%
- Staff Consistency – 8%
- Competition – 8%



What advice would you give to your freshman self?

- Be more motivated – 31%
- Chill out/Watch your Mental Health – 31%
- Practice – 11%



HOW TO BE SUCCESSFUL IN



10 THINGS THAT REQUIRE ZERO TALENT

- 1) BEING ON TIME
- 2) WORK ETHIC
- 3) EFFORT
- 4) ENERGY
- 5) BODY LANGUAGE
- 6) PASSION
- 7) DOING EXTRA
- 8) BEING PREPARED
- 9) BEING COACHABLE
- 10) ATTITUDE

PROGRAM STATUS

In order to remain in the program, students must meet the following requirements:

- Complete all required courses
- Avoid Excessive Absences
- Avoid Disciplinary Referrals
- Maintain a 2.5 GPA overall
- Maintain a 3.0 GPA in PCCA Courses
- Fulfill extended hours requirement
- Pass semester Juries

Failure to meet these requirements will lead to alert, probation, and finally dismissal from the program.

JURIES

- **Juries are auditions that you complete each semester while you are enrolled in PCCA.**
- **You will be graded on your progress and growth as an artist.**
- **If you fail to score at least a 7 out of 10, you will be put on probation. A second jury failure will lead to dismissal.**
- **If you do not complete your jury, you will be automatically dismissed from PCCA and sent back to your zoned school.**
- **You should start preparing for your juries early in the semester.**

EXTENDED HOURS

- In order to complete required curriculum and performances, students will be required to log their hours outside of the school day for studio time, rehearsals, and experiences

They will also be required to log hours for experiences outside of their arts major

- Each major has specific information about how to document and fulfill this requirement

ALERTS

- Alerts usually come out mid-semester
- If you receive a Alert, it means you are not meeting the program standards and you are in danger of being put on probation.
- If you are put on Alert, it means you have a problem and you need to fix it as soon as possible.
- You should talk to your core arts teacher about how you can correct the problem

PROBATION

- If you do not correct the problem you were alerted about, or you fall below the standards in the first semester, you will be placed on Probation at the semester break.
- If you do not correct the problem while on probation, you may be dismissed after one semester and sent back to your zoned school.

PROBATION

- You may be placed on probation without an alert if you:
 - Fail your jury
 - Fail to turn in extended hours
 - Commit a major code of conduct violation

REASONS FOR PROBATION

- **Extended Hours – 68%**
- **Arts GPA (3.0) – 32%**
- **GPA (2.5) – 32%**
- **Jury Score – 21%**
- **Attendance – 16%**
- **Behavior – 5%**

EXTENDED HOURS

- **Take advantage of free opportunities:**

10/10: Visual Art Show and Music Recital after school

12/12: Visual Art Show, Music Recital, and Theatre Cabaret after school

DISMISSAL

- If you are unable to correct your problem while on probation, you will be dismissed from the program.
- Dismissed students must return to their close-to-home school.

ATTENDANCE

A student who is not present in class at least one half of the class period shall be counted absent from that class.

To be counted present for the school day, a student must be in attendance for at least one half of the class periods during the school day.

Excused

- The student is ill or injured.
- There is a major illness in the student's immediate family (household)
- There is a death in the immediate family.
- The student attends religious instruction or there is a religious holiday in the student's own faith.
- The student is required to appear in court. (A copy of the subpoena or court order must be given to the Principal)
- Special event. (5 days prior notice from the Principal)
- The student has a scheduled medical or dental appointment..
- Student has a communicable disease.

Unexcused

- Oversleeping
- Missing the school bus
- Shopping trips
- Pleasure trips
- Car problems (ex: flat tire, no gas, car won't start, student getting a parking decal)
- Heavy traffic
- Returned for forgotten items

Note: Students have 5 tardy warnings each quarter, prior to receiving consequences

It is recommended, when possible, to schedule appointments outside of school hours, so students do not miss instruction.

Habitual tardiness is unacceptable and unfair to other students because instruction is interrupted every time a late student arrives. Individual schools may develop school-based consequences for tardy students.



ARRIVING LATE?

Here is what you need to know....



All Tardy and Late Arriving Students must sign in at the main office. Students who have an Excused Tardy will be given a pass to report directly to class.



Students who have an Unexcused Tardy will sign in at the Student Conductor kiosk to track their consequences.



Per policy, Unexcused Tardy students who miss half of the block or more, will be marked absent for that block. Those students will be sent to the IC room until the end of that block, so that they do not interrupt instruction.

GHS TARDY PROCESS



RESPECT, EXCELLENCE & PRIDE

SCHOLARS MORE THAN 15 MINUTES LATE WILL REPORT DIRECTLY TO THE STUDENT SERVICES TARDY KIOSK; A CONSEQUENCE WILL BE ASSIGNED.

1

1ST TARDY

- Teacher provides scholar with a verbal warning.

2ND TARDY

- Teacher provides scholar with a verbal warning & documents in the Parent Contact Log.

2

3

Your paragraph text
3RD TARDY

- Teacher provides scholar with a classroom reflection activity.

4TH TARDY

- Teacher informs parent about previous tardies & actions taken. Contact is documented in the Parent Contact Log.

4

5

5TH TARDY

- Teacher reaches out to the parent & provides a teacher-assigned detention.

6 OR MORE TARDIES

- Teacher writes an administrative referral.

6



"PUNCTUALITY IS NOT ABOUT BEING ON TIME, IT'S BASICALLY ABOUT RESPECTING YOUR OWN COMMITMENTS."
-UNKOWN

ATTENDANCE

- **15 unexcused absences within 90 days will result in a students' driver's license being revoked**
- **Attendance is crucial for grades and for progress to remain above average**
- **Poor Attendance may also impact Jury Score for the program**
- **Students with chronic absence and tardy issues should not be surprised to see low grades**

EXAM EXEMPTIONS

- All high school courses that do not have a state required end-of-course assessment (EOC), will have a final exam
- Students who do not take the final exam in a particular course, will receive a failing grade

EXAM EXEMPTIONS

- **Students can exempt up to 3 courses that have a provisional semester grade of "A", "B", or "C" *AND* fewer than 4 unexcused absences**

EXAM EXEMPTIONS

- For all high school courses that have a state required end-of-course assessment, the semester 1 final examination will be a district-developed common assessment, taken by all students enrolled in the course, and the end-of-year examination will be the state end-of-course assessment (EOC).
 - 9th Grade English, 10th Grade English, Algebra, Biology, Geometry, US History
- AP/AICE courses: Students are required to take the first semester exam. The second semester exam will be the AP/AICE exam.

ARTIFICIAL INTELLIGENCE

Cheating is defined in the Code of Conduct as:

The act of inappropriately and deliberately distributing or using information, notes, materials, or work of another person in the completion of an academic exam, test, or assignment. Not telling the truth.

- **All work submitted must be in the student's own words.**
- **The use of artificial intelligence applications such as ChatGPT, Grammarly, and many others to write assignments will be considered cheating**
- **Consequences include receiving a referral and a zero on the assignment**

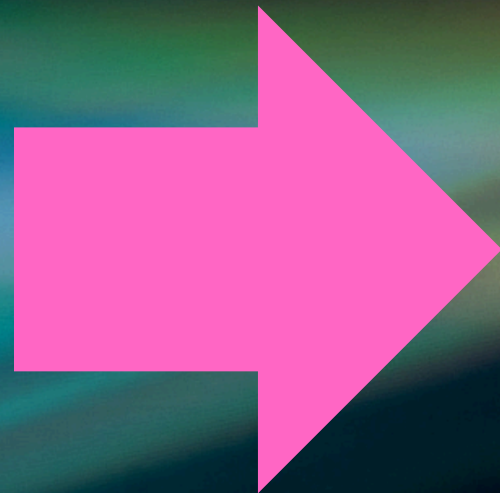
REFERRALS – SESIR INCIDENTS

- Alcohol
- Aggravated Battery
- Arson
- Bullying
- Burglary
- Criminal Mischief
- Disruption on Campus
- Drug Sale
- Drug Use
- Fighting
- Grand Theft
- Harassment
- Hazing
- Homicide
- Kidnapping
- Robbery
- Sexual Assault/Battery
- Sexual Harassment/Offenses
- Simple Battery
- Threat/Intimidation
- Tobacco
- Trespassing
- Weapons Possession

REFERRALS – SESIR INCIDENTS

- Alcohol
- Aggravated Battery
- Arson
- **Bullying**
- Burglary
- Criminal Mischief
- Disruption on Campus
- Drug Distribution
- **Drug Use**
- Fighting
- Grand Theft
- Harassment
- Hazing
- Homicide
- Kidnapping
- Robbery
- Sexual Assault/Battery
- Sexual Harassment/Offenses
- Simple Battery
- Threat/ Intimidation
- **Tobacco (Vaping)**
- Trespassing
- Weapons Possession

BULLYING



Viewing all your resources

View as Gibbs High School



PINELLAS COUNTY SCHOOLS

Favorite resources

Gibbs High School Resources

Top Applications

Instructional

Resources

Staff Resources

Learn More About Clever

More Apps

Resources



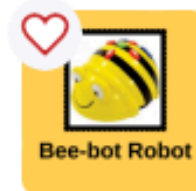
Adobe Express SSO-only



Albert



Edmentum - Apex Learning



Bee-Bot



Book Creator



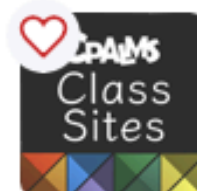
Bookshelf by VitalSource



Canva



Civics360



CPALMS Class Sites



CPALMS Florida Students



Dash Blockly App



Digital Theatre Plus Edu



Edmentum - Courseware, Assessm...



Florida Standards Assessments



Focus



Follett Destiny Back Office



Follett Destiny Discover



FortifyFL



Gale Staff



High School Science Center



KidCitizen



Learning Ally Audiobook Soluti...



Lumio by SMART



Lumio Student Log In



MackinVIA



Microsoft 365



Naviance



PBIS Rewards - SSO



PBS LearningMedia



SAFARI Montage



Say Something



Soraly Overdrive



Stanford History



Student Resources



TeachingBooks



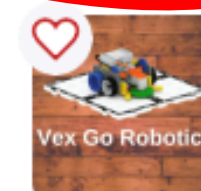
Teams



ThinkCERCA SSO



Typing.com



Vex Go Robotics



World Book Online

DRESS CODE

**Pinellas County Schools
Dress Code**

**[https://www.pcsb.org/dress
code](https://www.pcsb.org/dresscode)**



Jonathan C. Gibbs
HIGH SCHOOL



Cellphone Policy

Florida H.B. 379:

A student may not use a wireless communication device during instructional time, except when expressly directed by the teacher solely for educational purposes.

A teacher shall designate an area for wireless devices during instructional time.

Devices must be off or silenced and out of sight



RESPECT - EXCELLENCE - PRIDE

MR. VASALLO'S ADVICE

- Zeroes are grade killers
- Stay on top of deadlines – don't procrastinate!
- Cell Phones and Social Media are a HUGE distraction and create/encourage the *wrong* kind of drama
- Do not “hold anything” for a friend
- You WILL receive feedback – use it to make yourself better
- Start preparing early for your juries
- Get involved – don't sit back!

How to be a Gladiator!



RESPECT
EXCELLENCE
PRIDE

Focus Calendar

GLADIATOR GEAR UP

FRESHMAN WELCOME EVENT

AUGUST 10TH, 2024
9AM-11AM



 GIBBS HIGH SCHOOL

Home of the Gladiators 
Class of 2012

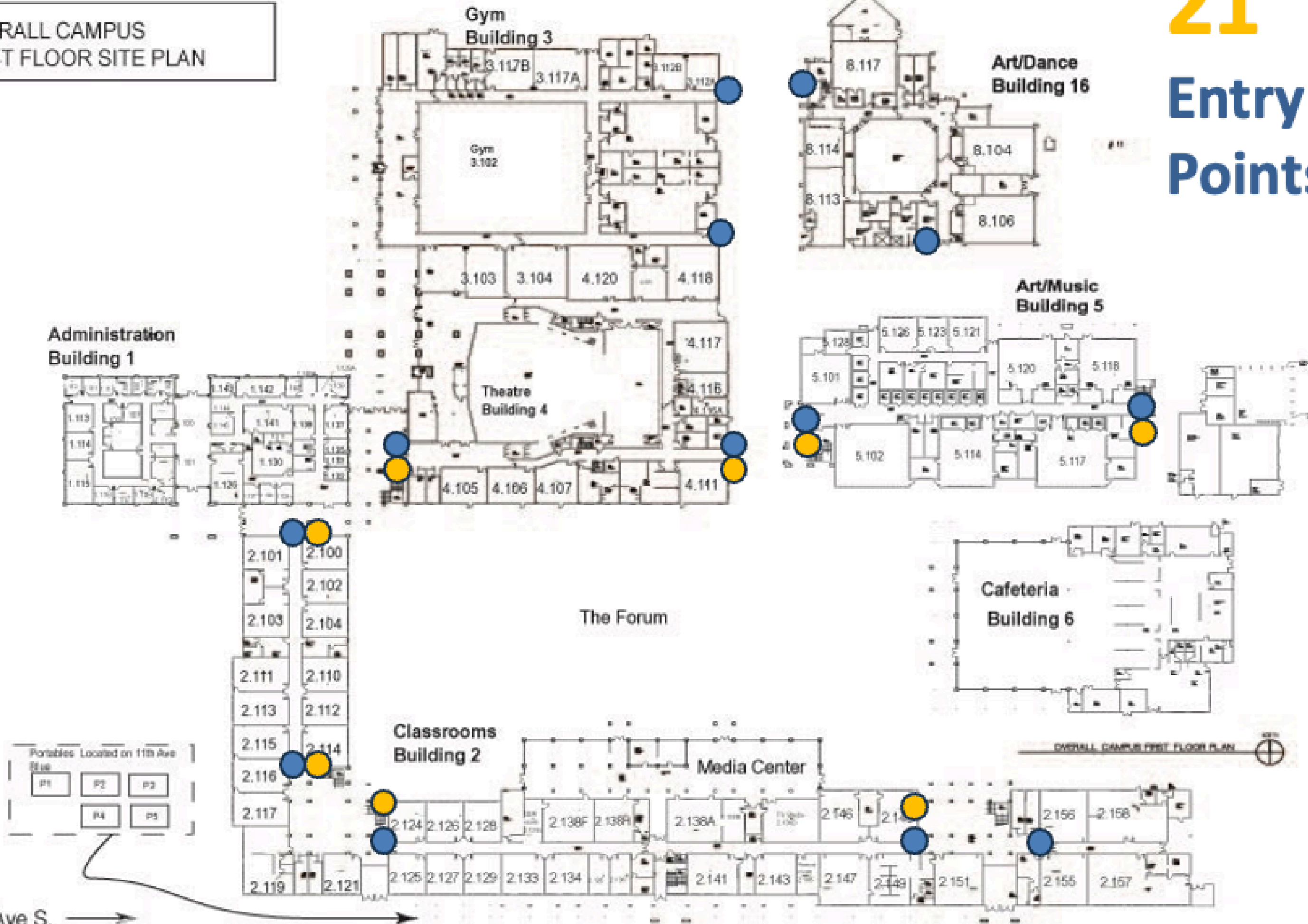


OVERALL CAMPUS
FIRST FLOOR SITE PLAN

21
Entry
Points

U.S 19 - 34th Street North

11th Ave S.



OVERALL CAMPUS
FIRST FLOOR SITE PLAN

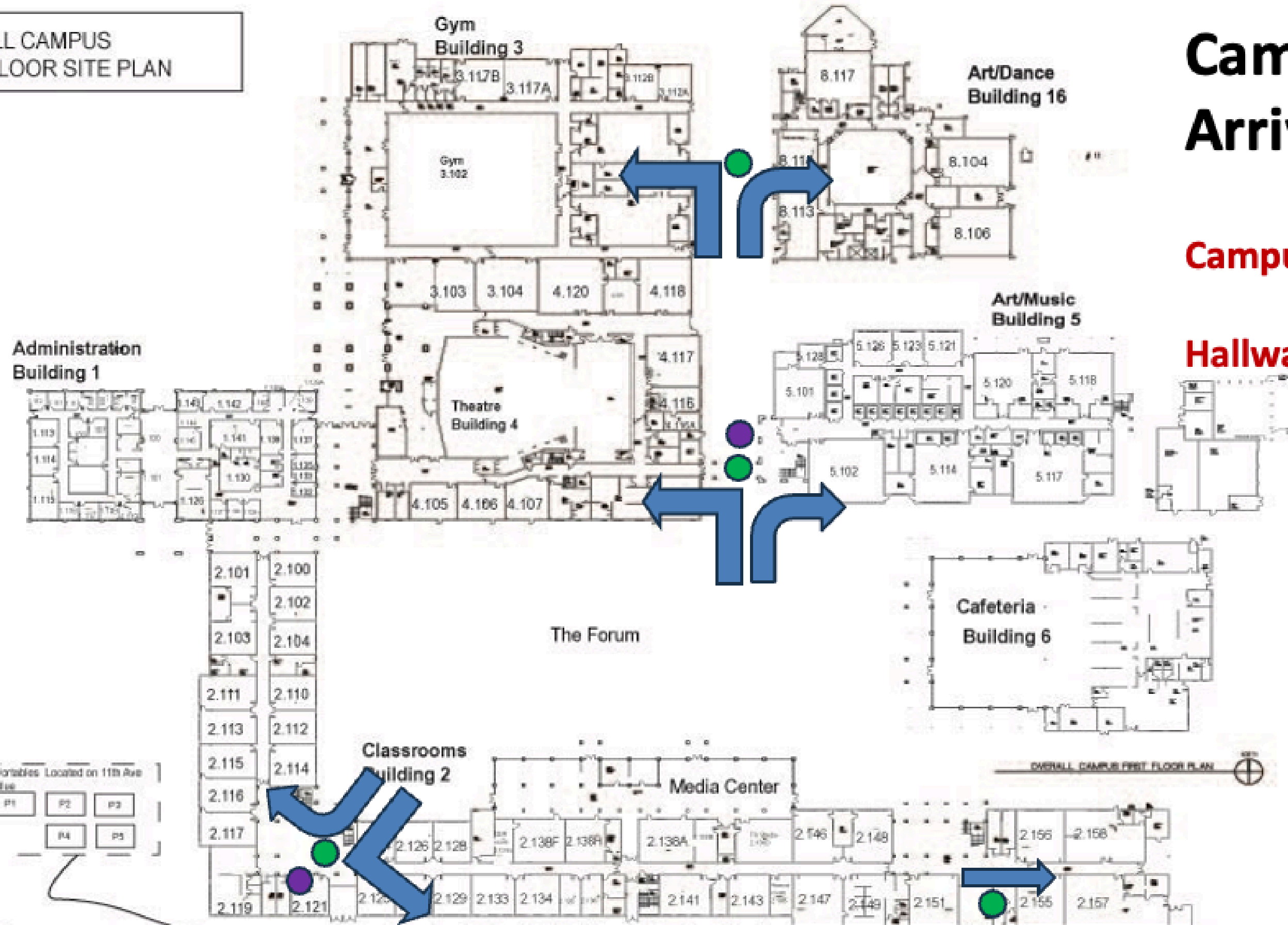
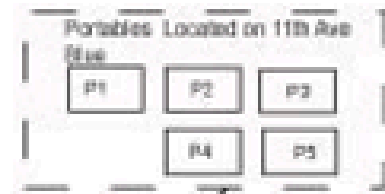
Inside Campus Arrival

Campus Opens: 6:40

Hallways Open: 6:55

U.S 19 - 34th Street North

11th Ave S.



OVERALL CAMPUS FIRST FLOOR PLAN

ENTRANCE TO BUILDING 2



ENTRANCE TO BUILDING 4&5



ENTRANCE TO BUILDING 3 & 8

Bell Schedule



2024-2025 GIBBS HIGH Bell Schedule

1st / 2nd Period	7:10-8:47
Passing Time	5 minutes
3rd / 4th Period	8:52-10:18
Passing Time	5 minutes
Lunch	10:23-10:53
Passing Time	5 minutes
5th / 6th period	10:58-12:24
Passing Time	5 minutes
7th / 8th Period	12:29-1:55

RESPECT ♦ EXCELLENCE ♦ PRIDE

Lunch

- One Lunch, lasting 30 minutes
- Students will be allowed to be in the Cafeteria, and the Courtyard
- Many teachers conduct tutoring during lunch. All students who attend tutoring must:
 - Have a pass
 - Bring a lunch
 - Report directly to the tutoring classroom

Lockers

- We do not have hallway lockers
- Dance Dept. has lockers – Use a Lock!
- PE locks are sold by PE teachers

Backpacks

- Backpacks are allowed and encouraged.
- Keep your personal items with you at all times

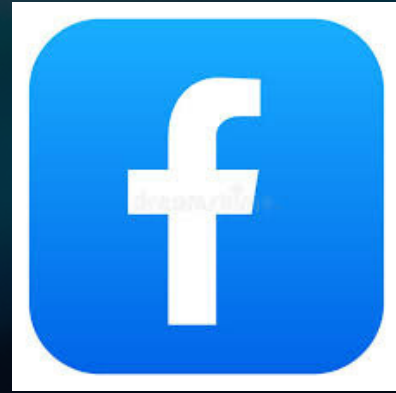
Parent Drop Off/Pick Up

- Parent drop off and pickup is in the 34th Street Lot
 - Cars line up in the far right northbound lane of 34th Street South
 - Drop off moves fairly fluidly in the morning – peak time is around 7:00 am
 - Students must be in class at 7:10am
 - Same Car Circle in the afternoon, but cars cue up in the South Parking lot to keep traffic moving on US 19
- There is also a car circle on 31st Street

Bus Transportation

- Buses depart at 2:06 sharp!
- Remain on sidewalk until your bus is ready for loading
- Ride only your bus – students may not ride a friend's bus home
- Honor bus rules –
Transportation is a privilege!





Follow Us!



< Pinellas County Cen... 4




Pinellas County Center for the Arts at Gibbs High School

756 likes · 873 followers





Arts Magnet School
Performing Arts
Visual Arts

[+ Create](#) [Advertise](#)

[See dashboard](#)

Home Ads Notifications Menu

pcca_gibbs 52 posts 604 followers 126 following



PCCA
Education
Official Instagram of Pinellas County Center for the Arts at Gibbs High School St Petersburg, Florida
[gopcca.com](#) and 2 more



Professional dashboard
1K accounts reached in the last 30 days.

[Edit profile](#) [Share profile](#)



Home Search Add Post Reels PCCA

< Gibbs High School

Gibbs High School

1.9K likes · 2.1K followers
Respect. Excellence. Pride.
Gooooo Gladiators!

[Liked](#) [Call Now](#)

[Posts](#) [About](#) [Videos](#) [More](#)

Details
Page · School
[gibbs-hs.pinellas.k12.fl.us](#)

See Gibbs High School's About

Home Ads Notifications Menu